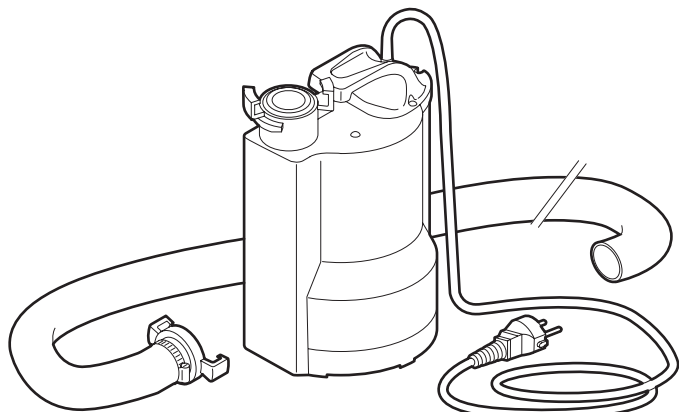


SUBMERSIBLE PUMP 4 M³

Instructions for Use and Safety

The water pump is intended for pumping water from underground spaces such as cellars, garages, etc. Use water pump for water level of minimum 7 mm to max. 3 m.



Caution!

Improper operation can injure the user or damage the device. Read the safety instructions first!

SAFETY INSTRUCTIONS



Safety for user

- Beware of infection! If necessary, take hygienic and sanitary precautions.
- Always use earthed electrical outlets.
- Keep children and pets out of reach of the machine.
- Use outdoors; Check that the device is connected via a ground leakage switch (max. 30 mA).

Check before use

- Device visually on defects.
- Electric power and power cord.

Contact your rental company should you encounter problems with the machine!

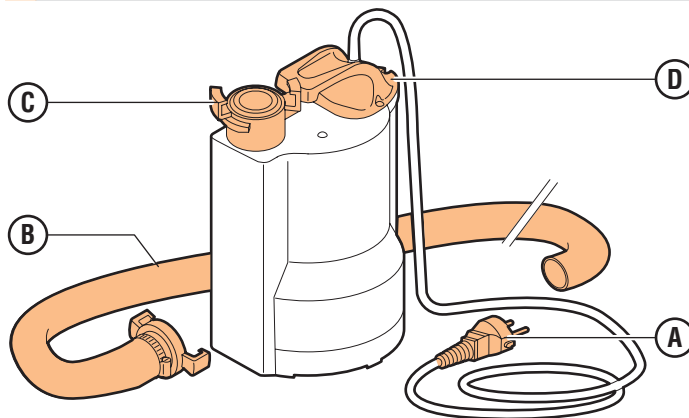
Safety during use

- **Never** lift the device using the power cord.
- **Never** pull the power cable to move device.
- Check water level during use. Never allow the pump to run dry.
- Handle the plug and power cord carefully.
- **Never** use the device with a damaged plug or power cord.
- Using an extension cable. Avoid power loss, use at minimum a 2.5 mm thick cable and keep the cable as short as possible. Unroll the cable all the way out.

Safety after operating

- After use remove the electric plug from the wall socket
- Allow residual pressure to escape from the drain hose.

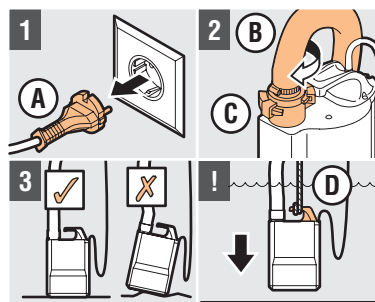
1. OPERATING FUNCTIONS



A Plug / power cord
B Drain hose

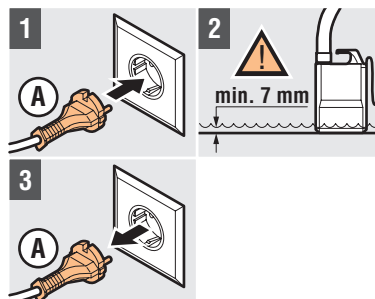
C Water hose connection
D Handle

2. PREPARATION FOR USE



- 1 Do not plug **A** into the power socket
- 2 Connect **B** to **C**
- 3 Place pump on flat surface
Caution! Optionally lower or lift the pump with a rope attached to **D**!

3. USE WATER PUMP



- 1 Plug **A** in a grounded electrical socket
- 2 Pump area empty. Check water level during use.
Caution! Minimum water level is 7 mm!
- 3 Remove **A** in time from the power outlet
Caution! Never allow the pump to run dry.

4. AFTER USE

- 1 Let any residual pressure escape via **B**
- 2 Disconnect **B**
- 3 Clean water pump