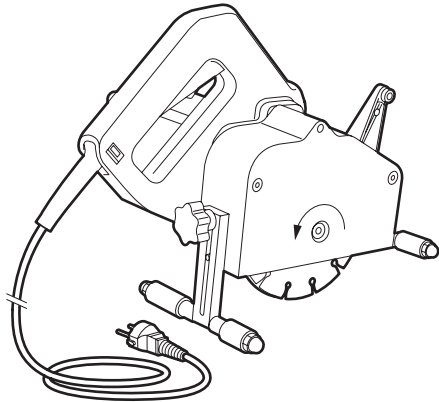


WALL SLOTTER

Instructions for use and safety

The wall slotter is intended for cutting slots in stone or concrete walls for example for placing power lines and water pipes. **Do not use wall slotter** for slots in soft stone, such as sandstone or plaster blocks (use a milling cutter wall chaser). The wall slotter saw has a variable width. **Contact the rental company for the various slot widths!**



Caution!

Improper handling can injure the user or damage the device. Read the safety instructions first!

SAFETY INSTRUCTIONS



Safety for user

- **Never** use the machine in a humid or wet environment.
- Always use earthed electrical outlets.
- Keep children and pets out of reach of the machine.
- Persons under 18 years of age may not work with the machine.
- Use outdoors; Check if the machine is connected via a earth leakage breaker (Max. 30mA).

Check before use

- For nails, screws, etc. remove these if present.
- Saw area for gas, water or electricity lines. Use if necessary a pipe detector.
- Functioning of on/off switch.
- Saw blade on centric rotation and oscillation.
- Correct locking saw depth setting.
- Check the machine visually for any defects.
- Damage of plug and power cord.

Contact your rental company should you encounter any problems with the machine!

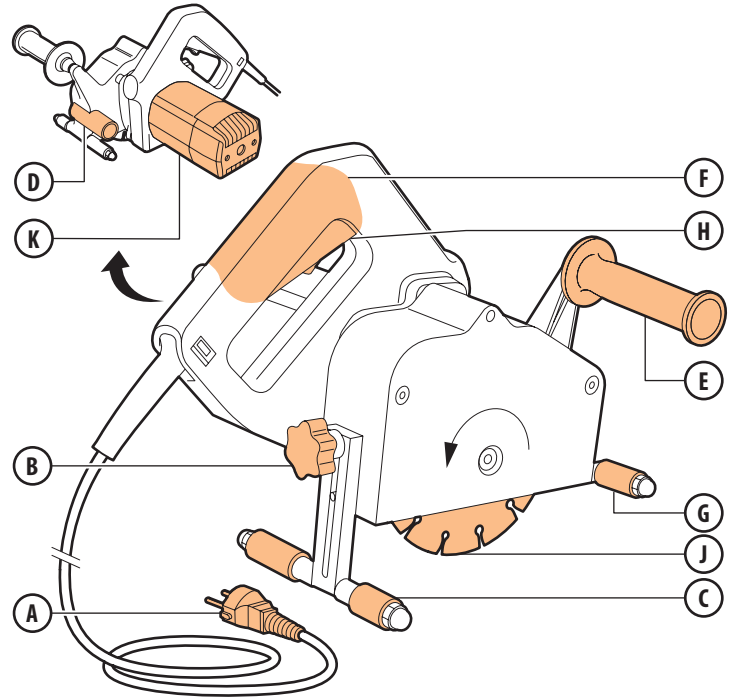
Safety during use

- **Never** lift the machine using the power cord.
- **Never** pull the power cable to move machine.
- Do not use deformed, damaged or blunt saw blades.
- Keep the machine dry.
- Hold the machine firmly with both hands.
- Do not force saw.
- Switch off machine immediately if saw gets stuck.
- Do not brake or block rotating saw.
- Lead the power cord from the rear of the machine.
- Handle the plug and power cord with care.
- **Never** use the machine with a damaged plug or power cord.
- Using an extension cable. Avoid power loss, use at minimum a 2.5 mm thick cable and keep the cable as short as possible. Unroll the cable all the way out.

Safety after operating

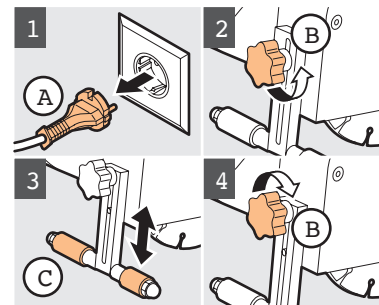
- After use remove the electric plug from the wall socket.

1. OPERATING FUNCTIONS



- | | |
|---------------------------------|-----------------------|
| A Plug / power cord | F Handle |
| B Rotary knob for depth setting | G Fixed track rollers |
| C Adjustable track rollers | H On-off switch |
| D Dust extraction | J Saw |
| E Handle | K Motor |

2. PREPARATION FOR USE

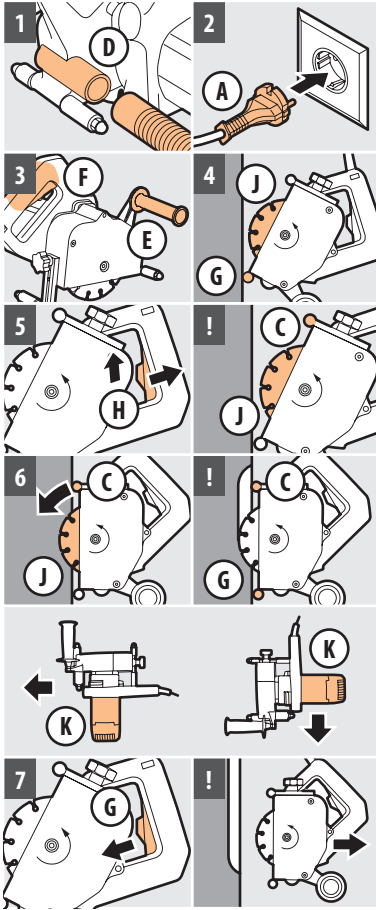


Set slot depth

Caution! Slot depth max. 20 mm at one time. For larger depths saw twice (max. 2 x 20 mm)

- 1 Do not plug A in power outlet
- 2 Turn B Loose
- 3 Adjust slot depth with C
- 4 Tighten B

3. OPERATING WALL SLOTTER



- 1 Attach **D**
Caution! Use vacuum cleaner, suitable for stone grit!
- 2 Plug **A** in grounded outlet
- 3 Hold machine at **E** and **F**
- 4 Place machine with **G** flush against wall; Keep **J** free
- 5 Slide button **H** and press **H** completely down
Caution! Let **J** rotate freely until machine reaches working revs!
- 6 Slowly let **J** cut into the wall until **C** is flush against wall and saw the slot
Caution! Hold **C** and **G** against wall!
 - Horizontal sawing: Keep **K** down, move machine from right to left
 - Vertical saw: Hold **K** on the right, let machine move by its own weight from top to bottom
- 7 Release **H** to turn off machine
Caution! Wait for saw to stop rotating, then remove saw from slot!

Sawing bends

- 1 Saw in 3 steps
Caution! Do not force saw!

4. AFTER USE

- 1 Unplug **A** from power outlet
- 2 Disconnect vacuum cleaner from **D**
- 3 Clean machine