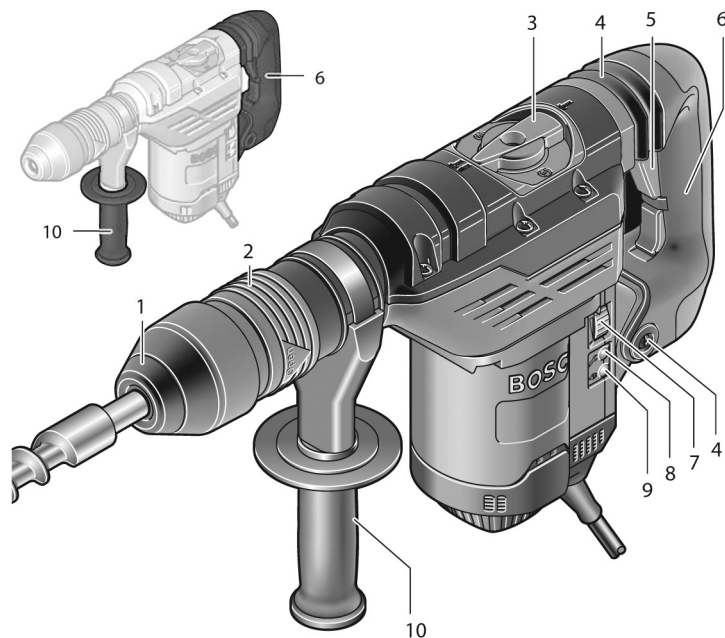
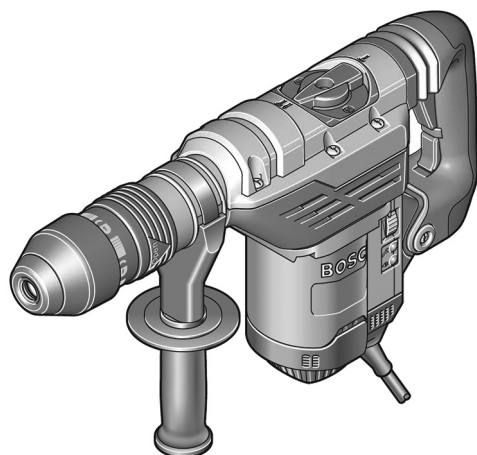


DRILL / ROTARY HAMMER

Use according to design

The machine is designed for hammer drilling in concrete, brick and stone and for chiselling.



SAFETY INSTRUCTIONS



- Wear an ear protection. Exposure to noise can cause loss of hearing.
- Use the extra handles supplied with the tool. The loss of control can lead to injuries.
- Hold the tool using the insulated grip when working in areas where the inserted tool could contact hidden power lines or the power cord. Contact with a power cable can risk metal parts of the tool to conduct voltage and lead to electrical shock.
- Use a suitable detection device to detect hidden power, gas or water pipelines or consult the local power or water management company. Contact with electrical cables can lead to fire or electric shock. Damage to a gas line can lead to an explosion. Fracture of a water supply causes material damage and may cause electric shock.
- Hold the power tool firmly with both hands during work and ensure that you are standing sturdy. The power tool is safer when guided with two hands.
- Secure the work piece. A work piece secured by a clamp or with a bench vice is more stable than held by hand.
- Wait until the power tool has stopped rotating before you lay it down. The insertion tool can get caught which can lead to loss of control over the power tool.

Read all safety warnings and all instructions.

Failure to follow the warnings and regulations may result in electric shock, fire or serious injury.

1. ILLUSTRATED COMPONENTS

The components are numbered as shown in the image of the power tool on the image page.

- | | |
|--------------------------------|--|
| 1 Dust protection cap | 6 Handle (Isolated grip) |
| 2 Locking sleeve | 7 Adjustable wheel speed selection or impact frequency |
| 3 Mode Selection Rotary Switch | 8 Service indication |
| 4 Vibration damper | 9 Standby indicator |
| 5 On-off switch | 10 Extra handle (insulated grip) |

* Not all accessories pictured and described are delivered as standard.

2. INSTALLATION

- Before starting work with the power tool always remove the plug from the mains.

Extra handle

- Only use the power tool with the extra handle 10.

You can turn the extra handle 10 to your liking for a safe posture while working without becoming fatigued.

- Turn the lower grip of the extra handle 10 counterclockwise and put the additional handle 10 in the desired position. Then turn the lower grip of the extra handle 10 clockwise.

Changing insertion tools

With the SDS-max tool holder, changing tools is simple and easy without using any extra aid. The dust cover 1 largely prevents the entry of drilling dust into the tool holder during use. When inserting the insertion tool, ensure that the dust cover 1 is not damaged.

- A damaged dust cover must be replaced immediately. It is recommended that this is carried out by customer service.

Placing insertion tool (see figure A)

- Clean the shank end of the tool and grease lightly. The red symbols (open locks and stripes) on the locking sleeve 2 indicate that the tool holder is open.
- Rotate the tool into the tool holder until it locks automatically. In addition, the locking sleeve automatically clicks forward and the red symbols are no longer visible. This indicates that the tool holder is locked.

Removing insert tool (see Figure B)

- Push the locking sleeve 2 backwards until the locking sleeve snaps into place. The red symbols on the locking sleeve are now visible. The locking sleeve stays in this position and the insertion tool can be removed without holding the locking sleeve.

Extraction of dust and debris

Dust from materials such as lead-containing paint, some types of wood, minerals and metal can be a health hazard. Contact or inhalation of substance may cause allergic reactions and / or respiratory diseases of the user or persons in the area. Certain types of dust, e.g. oak and beech wood, are carcinogenic, especially in combination with wood treatment additives (chromatic and wood preservatives). Asbestos-containing material may only be processed by certified professionals.

- Ensure good ventilation of the work area.
 - It is recommended to wear a breathing mask with a class P2 filter.
- Observe the regulations in force in your country for the materials to be processed.

3. OPERATING

Operating

- **Observe the mains voltage! The voltage must match the data on the power tool type plate. 230V electric power tools can also be used with 220V.**

Set function mode

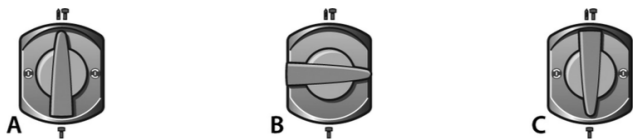
With the mode selection rotary switch 3 you choose the function of the power tool.

Note: Only change the function when the power tool is switched off. Otherwise, the power tool may be damaged.

- Turn the rotary mode selection switch 3 to the desired position.

Position for Hammer

If the inserted tool does not turn on immediately, allow the power tool to run slowly until the electrical insertion tool rotates.



A. Position **Vario-Lock** for adjusting the chisel position

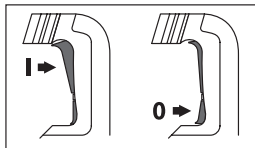
B. Position for **chisel work**

A. Set to the selection mode "**chisel**". The number of strokes of the machine is automatically increased with the adjusting wheel 7. This means that electric tool is able to chisel with an increased capacity

Turning the drilling function on and off

- If you want to **switch on** the power tool press and hold power switch 5.
- If you want **switch off** the power tool release the power switch 5.

Enable and disable the chisel function



- Switching the power tool **on**, press the on/off switch 5 up (I) until it locks.
- Switching **off**, press and release the power switch 5 under (0).

At low temperatures, the power tool only achieves full hammer or impact capacity after a certain period of time.

Set speed or number of impacts

The electronic control allows you to adjust the step-less speed or number of impacts according to the material worked on.

The constant-electronics keeps the preset speed or impact rate between unloaded and load running virtually constant.

If the plug is removed from the mains the power has been disrupted, the electronic control automatically sets the highest speed or highest number of strokes. It is possible that the setting of the adjusting wheel 7 is set too low to offer optimal capacity.

- Select the number of impacts with the adjusting wheel 7 matching the material.

The data in the following table are recommended values.

Overload coupling

- **If the insertion tool gets stuck or jammed, the drive shaft of the output spindle is interrupted. Due to the forces that occur, always hold the power tool firmly with both hands and make sure you are standing sturdy.**
- **Switch off the power tool and loosen the inserted tool when the power tool is blocking. High torque occurs if you turn on the machine while**

the drill tool has jammed. Switching chisel mode (Vario-Lock)

You can lock the chisel tool in 12 positions. This allows you to always work with the optimum setting.

- Insert the chisel in the tool holder.
- Turn the rotary switch 3 to "Vario-Lock" (see "Setting Function", page 40).
- Turn the tool to the desired chisel position.
- Turn the rotary switch 3 to "Chisel" mode. The tool holder is now locked.
- The rotary switch 3 must always be in the "Chisel" position before you start with chiseling work.

4. TIPS BEFORE OPERATING

- **Before starting work with the power tool always remove the plug from the mains.**

Vibration damping

The integrated vibration damper reduces vibrations.

The soft grip provides better grip and handling of the power tool.

5. MAINTENANCE AND CLEANING

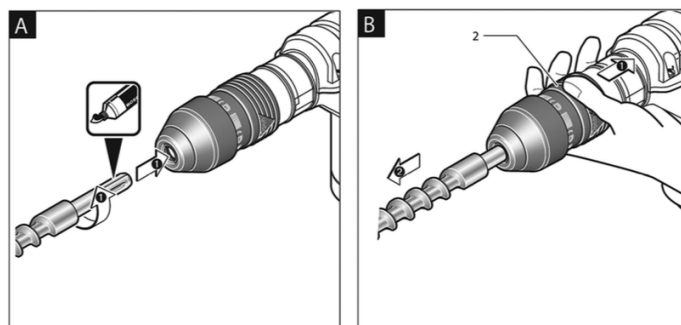
- **Before starting work with the power tool always remove the plug from the mains.**
- **Always keep the power tool and the ventilation openings clean to work efficiently and safe.**
- **A damaged dust cover must be replaced immediately. It is recommended that this is carried out by customer service.**

Service indication 8

When the carbon brushes are worn, the power tool will switch off automatically. This will be approx. This is indicated about 8 hours beforehand by lighting or blinking of the service indicator 8. The power tool must be shipped to customer service for maintenance.

Standby indication 9

When the tool is plugged in the mains, the standby indicator 9 must be lit. If the power tool cannot be turned on while the standby indicator 9 is lit, it must be sent to customer service.



Contact the rental company should you encounter problems with the device!

The product must be returned clean and undamaged.